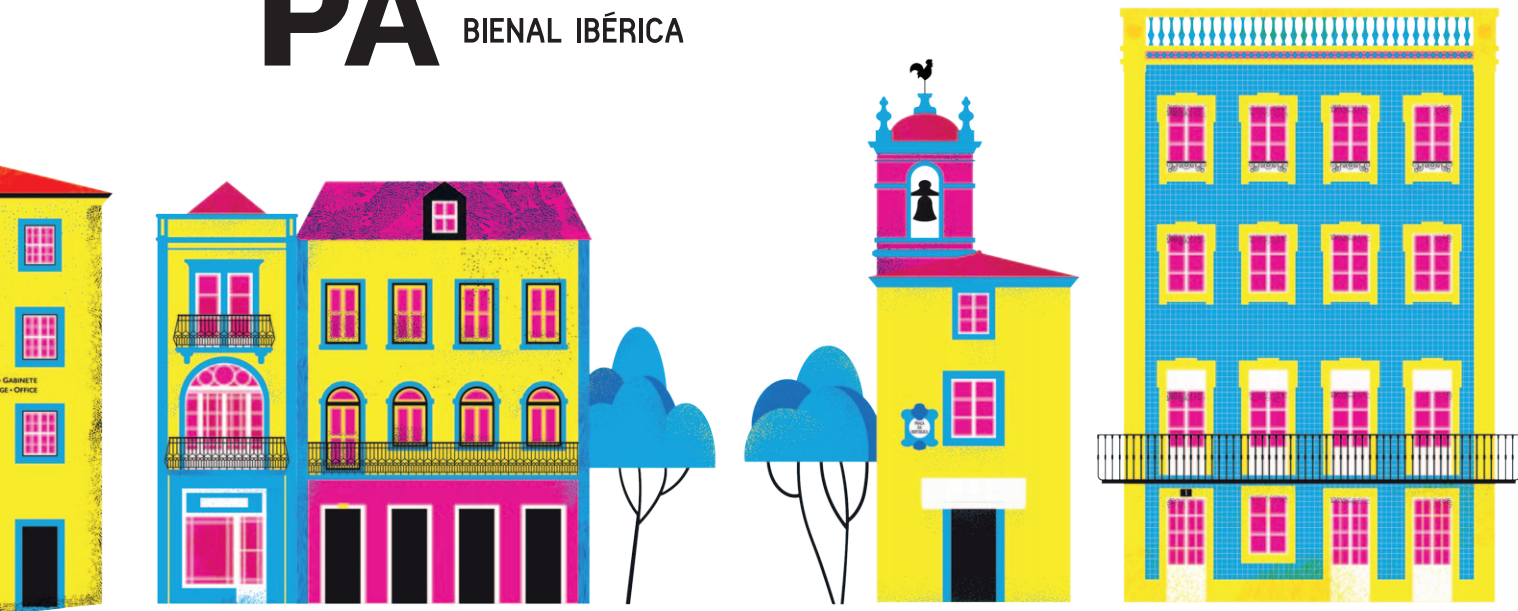


AR PA

PATRIMÓNIO
cultural
BIENAL IBÉRICA



EXHIBITOR
CATALOGUE.

04. 05.
DECEMBER
2025.

SINTRA
OLGA CADAVAL CULTURAL CENTRE
MU.SA - SINTRA MUSEUM OF ARTS

IBERIAN BIENNIAL
OF CULTURAL HERITAGE

(HISTORICAL
CENTRES)

IBERIAN BIENNIAL
OF CULTURAL HERITAGE

**04. 05.
DECEMBER
2025.**

AR-PA PATRIMÓNIO
cultural
BIENAL IBÉRICA

SINTRA

OLGA CADAVAL CULTURAL CENTRE
MU.SA - SINTRA MUSEUM OF ARTS

**(HISTORICAL
CENTRES)**

**EXHIBITOR
CATALOGUE.**



CELEBRATIONS
OF THE 30 YEARS
OF SINTRA CULTURAL
LANDSCAPE AS A
WORLD HERITAGE SITE

INDEX.

PRESENTATION	5	CIRAM	28	Fundação Manuel Cargaleiro	39	Museu de Portimão	51	Projeto "Mulheres na Resistência	Spira	70
		Comunicar Arqueologia	29	Fundação Millennium bcp	40	Museu de Sesimbra	52	à Ditadura em Setúbal"	Turismo do Centro de Portugal	71
EXHIBITORS		Conservation Practice	30	Fundo Rainha D. Leonor/		Museu Municipal de Loulé	53	Punta Begoña, Getxo-Basque Country.	Vila Nova de Foz Côa: Um concelho,	
3Decide – Making Business Visually	18	Departamento de Conservação e Restaura		Santa Casa da Misericórdia de Lisboa	41	Museu Nacional Ferroviário	54	Património que conecta Heritage that	dois Patrimónios Mundiais	72
Alfa Lupo	19	NOVA FCT	31	Herifairs – Rede Europeia de Feiras		Napperon	55	connects with society	Vínculos com (a) História: à descoberta das	
Anyforms Design	20	EDIA – Empresa de Desenvolvimento		de Património Cultural	42	NCREP – Heritage Consultancy, Lda.	56	Realizasom	casas históricas da Ribeira Lima	73
AR-PA TC Junta de Castilla y León	21	e Infra-estruturas do Alqueva, S.A.	32	HeritArq	43	O Museu visita a Escola		Rede de Museus Municipais de Setúbal	World Monuments Fund	74
Atelier SAMTHIAGO	22	EDIGMA	33	iGuzzini	44	– Câmara Municipal de Loures	57	– Município de Setúbal		
Blue Line	23	Escola das Artes – UCP	34	Instituto de Estudos Medievais	45	Palazzo Spinelli	58	Revelamos	PROGRAMME	77
byAR	24	Escola Profissional de Recuperação		Laboratório HERCULES	46	Parques de Sintra	59	Rota do Fresco		
Câmara Municipal de Sintra	25	do Património de Sintra	35	MUDE – Museu do Design	47	Património histórico militar: sete museus		Rota do Românico – Turismo do Porto e		
CEARTE – Centro de Formação Profissional		Espanha Creativa	36	Município de Barcelos	48	e mais de trinta coleções visitáveis em		Norte de Portugal		
para o Artesanato e Património	26	FAR – Fortalezas Abaluartadas da Raia	37	Município de Tavira	49	todo o país	60	Rotas Açores – Itinerários Culturais e		
Chroma – Restauració del Patrimoni	27	Fundação CulturSintra	38	Município de Vila Franca de Xira	50	Politécnico de Tomar	61	Paisagísticos		

PRESENTATION.





Catarina Valença Gonçalves

GENERAL MANAGER OF SPIRA – HERITAGE REVITALISATION

Here we are at the start of the second decade of AR-PA – Iberian Biennial of Cultural Heritage. And we couldn't do it in a better setting: not only in a 'glorious Eden', according to Byron, but also on the occasion of the 30th anniversary celebrations of the Cultural Landscape of Sintra as a World Heritage Site.

This festive occasion does not prevent us, however, from asking the necessary questions, which is why the theme of the 2025 Biennial is the complex subject of Historic Centres. In fact, the Biennial, from the outset, has been a meeting place for professionals and organisations working in the field of Cultural Heritage in Portugal and Spain, but also, given this concentration of knowledge and experience in the field, an opportunity for reflection, discussion and the search for new solutions to persistent problems. Giving priority to open debate, with

diverse and sometimes Favouring open debate, made up of diverse, sometimes antagonistic opinions, in a space of quality and in the pursuit of public interest are not insignificant goals, especially in the current climate.

In this edition, in addition to representatives from Portugal and Spain, professionals from the United Kingdom, Italy, France, Poland and Georgia will also be present, totalling more than 80 entities, thus giving the still young Biennial, in addition to an Iberian character, a reinforced European reach, with Portugal emerging as the host of this stage for sharing knowledge, contacts and testing new possible joint projects.

It is therefore with great satisfaction that Spira celebrates the 8th edition of the Iberian Cultural Heritage Biennial in close collaboration with several entities: both the national partners present since the 1st edition in 2013, with special mention of the Millennium BCP Foundation Millennium bcp; as well as the prestigious High Patronage of the President of the Republic; the collaboration with the Junta de Castela & Leão as the Spanish partner; and, especially this year, the Municipality of Sintra and the Cultursintra Foundation as hosts and promoters of this edition of the event.

This is also an edition with a new format, with the Biennial now concentrated into two professional days and with a new date – the first Thursday and Friday of December: with this change in duration and date, we aim to encourage everyone's participation, both in terms of the availability of professionals for the days of the event and because it takes place at the end of the year and in preparation for the next, already in a quasi-festive atmosphere.

However, we remain itinerant – an indelible mark of AR-PA Portuguesa – strongly believing that it is also the mission of the Biennial, especially in a country with the size and diversity of Portugal, to focus on territories, sites and heritage sites scattered across the continent and islands.

With this in mind, from this edition onwards, the Biennial will have an Advisory Board, representing specialist knowledge in the field of Cultural Heritage, but also from diverse geographical origins, seeking, in this way, to cover opportunities for exchange both in Portugal and Spain.

A diversity of European thought is reflected in the number of exhibitors present, but also in the debate platforms created. This is the case of the International Debate on Heritage Fields – Volunteering in

Cultural Heritage, which brings together, for the first time in Portugal, representatives from France, Spain, Georgia, Poland and Portugal, of course. We believe that Volunteer Camps are a very interesting way of intervening and restoring heritage, particularly unclassified heritage (around 34,000 monuments in Portugal), generating alternative cultural tourism with high added value for the territories and their communities, marked by sustainability in all its aspects.

Also directly integrated into the theme of this edition is the Dinner-Debate with Carlo Francini, Director of the Historic Centre of Florence, a city with around 350,000 inhabitants but 15 million visitors a year, to be held in the beautiful Swan Room of the Nacional Palace of Sintra, provided by one of our partners – Parques de Sintra. We aim to bring to Portugal the discussion of sustainability in historic centres, both in cities and rural areas, in view of the new reality of tourism in our country.

We are also introducing a new discussion format, the Podcasts património.pt, which, during the two days of the Biennial, will address in 5 'episodes' topics such as alternative financing models, heritage management models, various case studies of historic centres and, finally, inspiring Good Practices in this area. We are counting on

around 20 Portuguese, Spanish and Italian professionals to address these issues, in a moderator and interviewee model, recorded on video and sound for future editing.

The Biennial will also, as always, be an excuse for countless groups of children from the 1st and 2nd cycles of the Sintra region to visit, believing Spira that it is also (and perhaps above all) the responsibility of current professionals in the sector to win over today's young people to the cause of heritage, whether as users or as future professionals – whom we so badly need...

As always, the Biennial relies on a host of volunteers of different ages and backgrounds who give their time and energy in exchange for knowledge and contacts, in a dynamic that has characterised the Biennial since its first edition, but also many of the initiatives that

Spira has the opportunity to carry out in Cultural Heritage: we believe, in the British manner, that Volunteering and Cultural Heritage are, in many ways, synonymous.

Finally, we return and conclude with another Iberian Heritage Awards Ceremony to celebrate the world of Cultural Heritage, its professionals and its projects, in a necessary, healthy and festive competition between peers. Between the Olga Cadaval Centre, MU.SA, the Sintra Library and the National Palace of Vila, there will be two days that we wish all promoters, guests, speakers, exhibitors and visitors many contacts, discoveries and learnings at the end of 2025, surrounded by the 'glorious Eden' of the Cultural Landscape of Sintra – World Heritage Site.

Thank you to everyone who made this Biennial possible.



Marco Almeida

MAYOR OF THE MUNICIPAL CHAMBER OF SINTRA

AR-PA – Iberian Biennial of Cultural Heritage 2025

Sintra is a true melting pot of cultures, welcoming citizens from a wide variety of European and non-European backgrounds, who enrich the cultural and social identity of the region, creating a space for encounter and dialogue between cultures.

With this new perspective, we focus on cultural heritage, starting from diversity, promoting the fundamental values of equality and freedom, essential pillars of today's society, which through harmony between the past and the present, compel us to reinforce the importance of building an inclusive and supportive future.

Hosting the AR-PA Iberian Biennial means investing in the development of a multifaceted strategy that reinforces the dissemination of cultural heritage, increasing literacy and heritage education, the role of heritage in the economic and sustainable development of the region, seeking to promote synergies between the various cultural agents and contemporary creation and creativity.

We highlight as fundamental the sharing and exchange of experiences that an initiative such as this promotes and stimulates in the field of training and knowledge, contributing to the enrichment and dissemination of good practices in cultural heritage management. We highlight as a fundamental aspect the training of professionals, institutions and entities involved in cultural heritage, as well as the visiting public.

The special focus on future generations, centred on heritage and cultural education – so dear to the Iberian Biennial – finds fertile ground in the educational strategy of the municipality of Sintra, where the Sintra Professional School of Heritage Restoration has been thriving for decades, as well as the dynamic undertaken within the educational fabric, from compulsory schooling to the expanding

university sector in our territory with ISCTE, the Catholic University and the Higher Technical Institute.

The municipality of Sintra and its partner Parques de Sintra – Monte da Lua have maintained a strong focus on the management of the Cultural Landscape, in terms of conservation and restoration, cultural animation, dissemination and accessibility to cultural heritage.

The exceptional values of this truly unique historical cultural landscape are based on the harmonious fusion between nature and built heritage. Parks, gardens, palaces, country houses, monasteries and castles blend into the lush vegetation, creating a unique ensemble where architecture dialogues with the natural surroundings, giving rise to small worlds of luxuriant and unexpected beauty. The diversity of influences and styles makes the landscape particularly rich, revealing new surprises to visitors at every turn. The uniqueness and botanical abundance of the mountains, combined with the enchanting atmosphere that characterises them, transform the walk into a truly distinctive experience.

At the foot of the mountains, the historic centre of Sintra presents a different architectural image, although consistent, despite the formal

diversity of its buildings. This harmony results from the balance produced by the rhythm of the façades and the openings, by the volumetric restraint and by the traditional shades and textures that give unity to the whole.

Like many other places in an increasingly globalised world, the Cultural Landscape of Sintra faces complex but stimulating challenges that require all public and private actors to join forces to safeguard and recognise its sustainability by preserving the harmony of its exceptional universal value.

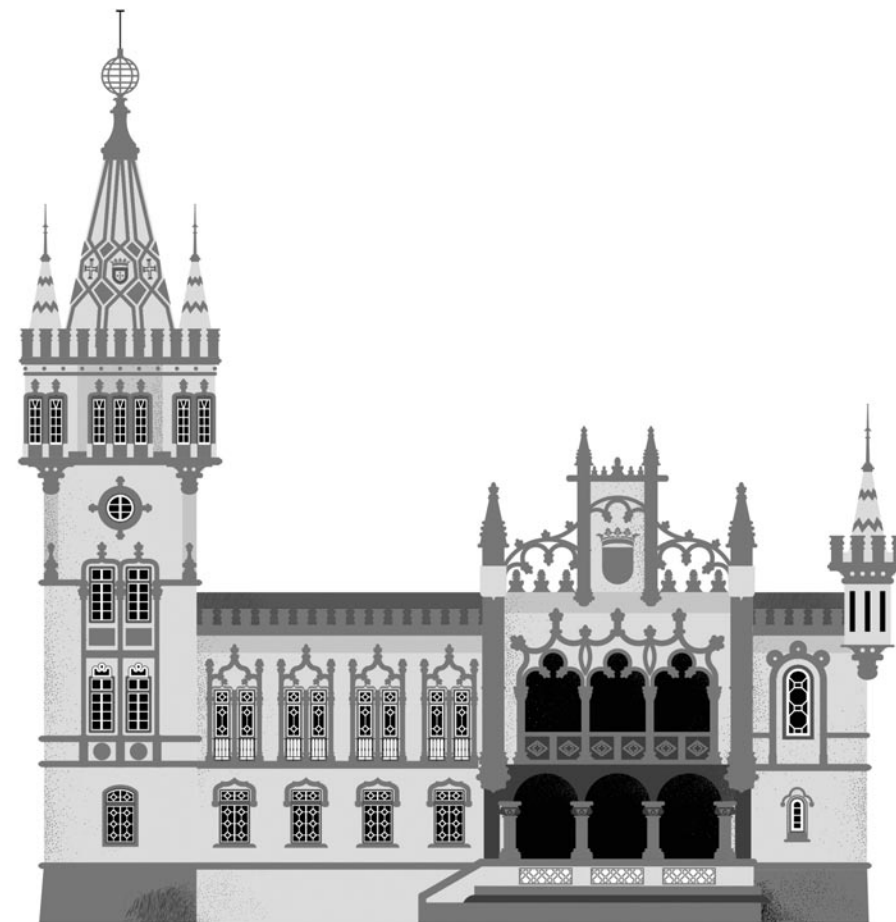
Based on the fundamental principle that enjoying cultural heritage contributes to improving the living conditions of a community, and that a society that allows itself to enjoy culture will provide more environmentally and psychologically sustainable conditions for its citizens, the aim is to invest in sustainable tourism that can withstand the heavy pressure of visitors currently seen in Sintra.

In this context, the debate and reflection on accessibility – the central theme of the 2025 Biennial – as a broad concept that involves and encompasses inclusion, diversity, understanding and intelligibility, far

beyond transitivity, will greatly contribute to mending, generating approaches, readings and learning around the management of world heritage sites.

It is therefore with great satisfaction and joy that, as part of the celebrations of the 30th anniversary of the Cultural Landscape of Sintra World Heritage Site, Sintra will be the stage for the great celebration of the AR-PA Iberian Biennial 2025.

Enjoy!



Ambassador António Monteiro

PRESIDENT OF THE MILLENNIUM BCP FOUNDATION

It is with particular pleasure that the Millennium bcp Foundation once again supports and participates in another edition of AR-PA – Iberian Biennial of Cultural Heritage, a landmark event in the cultural heritage sector in Portugal and Spain.

This edition is particularly significant for us for three reasons. Firstly, because it takes place within the context of the commemorations of the 30th anniversary of the classification of the Cultural Landscape of Sintra as a World Heritage Site – the first classification of this type awarded anywhere in the world. Secondly, because it is a distinctly European edition, bringing together representatives from numerous countries and highlighting the potential of Cultural Heritage as a space for dialogue and rapprochement between peoples. And finally, because this Biennial coincides with an equally symbolic milestone for the Millennium bcp Foundation: its 30th anniversary.

Throughout these three decades of activity, the Foundation has contributed to countless projects dedicated to cultural and heritage enhancement – including museum initiatives, heritage restoration and preservation interventions, and support in the areas of architecture, visual arts, music, dance and theatre.

The Foundation's mission is to promote the development of cultural and artistic activities in Portugal, with a focus on the preservation and enhancement of cultural and heritage assets, as well as the promotion of artistic and cultural creation.

In this regard, it is important to note that the Foundation has been collaborating, at different times and in different formats, with initiatives promoted by Spira. From the initial acceptance in 2013 of the proposal to hold a professional fair in Portugal dedicated to Cultural Heritage, to the subsequent evolution into the Iberian Biennial, the Foundation has made several contributions over the course of various editions. Added to this track record are the study 'Cultural Heritage in Portugal: Assessment of Economic and Social Value' (2020) and the publication of the monograph 'The Next 10

Years of Cultural Heritage in Portugal: Trends' (2023), both of which are relevant developments for the sector. This support illustrates the importance that the Foundation has attached, over the years, to informed debate and strategic reflection on the future of Cultural Heritage.

It is therefore with particular satisfaction that, in 2025, the Millennium bcp Foundation is once again joining this initiative, at a time when the Biennial is entering its second decade, with a new format and calendar, but maintaining its itinerant identity – a significant contribution to the enhancement of the territories, places and heritage sites that reflect the cultural diversity of our country.



**THE AR&PA BIENNIAL
2025 WILL BE
ATTENDED BY THE
FOLLOWING PUBLIC
AND PRIVATE ENTITIES
AS EXHIBITORS.**

3Decide – Making Business Visually

Alfa Lupo

Anyforms Design

AR-PA TC | Junta de Castilla y León

Atelier SAMTHIAGO

Blue Line

byAR

Câmara Municipal de Sintra

CEARTE – Centro de Formação Profissional
para o Artesanato e Património

Chroma – Restauració del Patrimoni

CIRAM

Comunicar Arqueologia

Conservation Practice

Departamento de Conservação e Restauro NOVA FCT

EDIA – Empresa de Desenvolvimento e Infra-estruturas
do Alqueva, S.A.

EDIGMA

Escola das Artes – UCP

Escola Profissional de Recuperação do Património de
Sintra

España Creativa

FAR – Fortalezas Abaluartadas da Raia

Fundação CulturSintra

Fundação Manuel Cargaleiro

Fundação Millennium bcp

Fundo Rainha D. Leonor/ Santa Casa da Misericórdia
de Lisboa

Herifairs – Rede Europeia de Feiras de Património Cultural

HeritArq

iGuzzini

Instituto de Estudos Medievais

Laboratório HERCULES

MUDE – Museu do Design

Município de Barcelos

Município de Tavira

Município de Vila Franca de Xira

Museu de Portimão

Museu de Sesimbra

Museu Municipal de Loulé

Museu Nacional Ferroviário

Napperon

NCREP – Heritage Consultancy, Lda.

O Museu visita a Escola – Câmara Municipal de Loures

Palazzo Spinelli

Parques de Sintra

Património histórico militar: sete museus e mais de trinta
coleções visitáveis em todo o país

Politécnico de Tomar

Projeto "Mulheres na Resistência à Ditadura em Setúbal"

Punta Begona, Getxo-Basque Country. Património
que conecta | Heritage that connects with society

Realizasom

Rede de Museus Municipais de Setúbal
– Município de Setúbal

Revelamos

Rota do Fresco

Rota do Românico – Turismo do Porto e Norte de Portugal

Rotas Açores – Itinerários Culturais e Paisagísticos

Spira

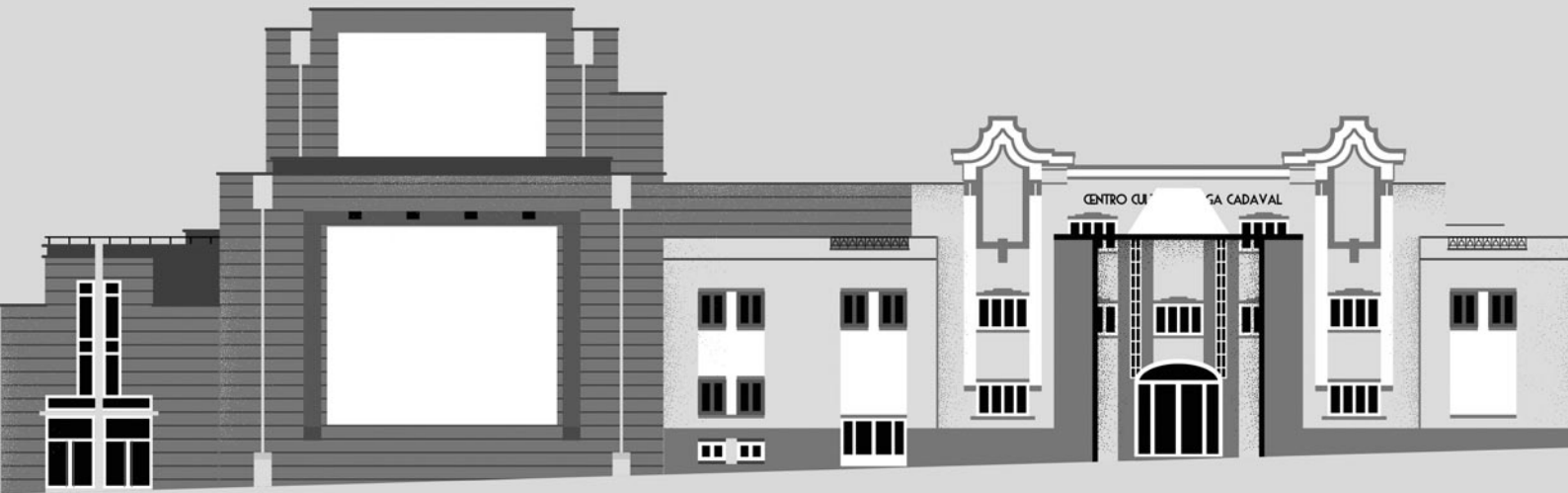
Turismo do Centro de Portugal

Vila Nova de Foz Côa: Um concelho,
dois Patrimónios Mundiais

Vínculos com (a) História: a descoberta das
casas históricas da Ribeira Lima

World Monuments Fund

EXHIBITORS.





3DDecide – Making Business Visually

[HTTPS://3DECIDE.COM/PT](https://3decide.com/pt)

We are living through the Visual Revolution — a time when data is transformed into experiences and technology into emotion! For over 15 years, 3DDecide has been building bridges between the digital world and heritage, converting the new generation of data (3D models, LIDAR point clouds, 360° images, geographical maps, etc.) into interactive digital solutions, both online and in physical kiosks. We give shape to the invisible and bring people, technicians and decision-makers closer together, making the territory and memory more understandable, accessible and alive.



Alfa Lupo

[HTTPS://ALFALUPO.COM](https://alfalupo.com)

ALFA LUPO is an interactive map and timeline within a web application available in various languages. It places the traveller at the centre of heritage, tourism, mobility, and local commerce during their visit. Unlike other mapping and guiding tools, ALFA LUPO provides exploration in both space and time for visitors, along with route customization. Content management is in the hands of the city administration or even each heritage and commercial site.

Anyformsdesign

[HTTP://WWW.ANYFORMSDESIGN.COM](http://www.anyformsdesign.com)

Anyforms Design – an agency specialising in illustration, infographics, and illustrated maps – is dedicated to transforming information and knowledge into clear and engaging visual narratives.

Its products – maps, guides, leaflets, and brochures – combine illustration, infographics, graphic resources, and short texts to create visual information in printed or digital formats, with original designs.

Cities, historic centres and heritage are among the themes most frequently explored by Anyforms.



AR-PA is the Cultural Heritage Fair that originated in 1998 in Valladolid, Spain. Over 28 years and 15 editions, we have grown steadily and adapted to the changing times. After its relaunch in 2024, the AR-PA fair, organised by the Regional Government of Castile and León, celebrated its first annual edition in 2025, consolidating a new phase and reaffirming the professional, social and innovative profile, as well as the forum for debate that has always characterised AR-PA. The central theme for 2025 was 'Artificial Intelligence and Cultural Heritage'.

AR-PA TC | Junta de Castilla y León

[HTTPS://ARPATURISMOCULTURAL.ES](https://arpaturismocultural.es)

This theme responded to the need to explore how AI transforms the conservation, management, dissemination and enhancement of Cultural Heritage. AR-PA 2026, in November 2026 in Valladolid, Spain, presents itself as a platform for dialogue, innovation and the dissemination of Cultural Heritage. AR-PA is, once again, the main meeting point for companies, professionals, institutions, emerging projects and the general public, all focused on heritage and culture. Much more than a trade fair, AR-PA is a vibrant space for the exchange of ideas, innovation and collaboration.

Atelier SAMTHIAGO

[HTTPS://SAMTHIAGO.COM](https://samthiago.com)

Atelier SAMTHIAGO[®] – a registered trademark that identifies the company Carlos José Abreu da Silva Costa, Lda – is celebrating its 20th anniversary! We position ourselves in the market with a view to promoting and, in particular, preserving and conserving historical and artistic heritage. We focus our work on the conservation and restoration of historical and artistic heritage and are one of the most important names in the sector in Portugal and Spain.



Blue Line

[HTTPS://BLUELINE.PT](https://blueline.pt)

20 years of solid experience. The experience gained from hundreds of projects allows us to develop more refined communication strategies and creative approaches. We create carefully for everyone, following the best principles. We adapt new models to each target audience. We are part of the path to accessibility. Because every detail makes a difference, we evaluate the solutions available for the project and personally monitor the implementation of all phases. We integrate 3D printed models, virtual reality and high-impact 360° videos into our communication. We work on communication for the future."

byAR

[HTTPS://WWW.BYAR.PT](https://www.byar.pt)

We create digital environments that connect stories, people, and spaces. For museums, exhibitions, tourist attractions, events or any place where you want to tell a good story. Based on your story, we create a narrative, which we combine with Augmented Reality and other technologies to provide everyone with an experience that extends beyond the space and time in which it is told. We produce the digital content, develop the software and integrate the hardware into the project.



Câmara Municipal de Sintra

[HTTPS://CM-SINTRA.PT](https://cm-sintra.pt)

30 YEARS OF THE CULTURAL LANDSCAPE OF SINTRA Shintara, Sintria, Sintra, "Vila Velha", Historic Centre

With prehistoric and protohistoric origins, the Historic Centre of Sintra, and its vernacular and erudite houses, perched on a slope of the Serra de Sintra – which also plays a leading role in this History-Heritage-Landscape – and the medieval Royal Palace with sweeping views over the plain and the ever-stormy sea, the "end of the world" of yesteryear, has long been considered a unique place. This character is also expressed in its experiences, in the "mist that never dissipates", in the pleasant temperate climate and its waters. This was the setting for the long-remembered prologue to the Cultural Landscape of Sintra. That is why, in celebration of 30 years of World Heritage, this 2025 Iberian Biennial of Cultural Heritage is dedicated to the Historic Centre of Sintra... after all, the leitmotif of this place of exceptional universal value.



CEARTE

Centro de Formação
Profissional para o
Artesanato e Património

CEARTE – Center for Professional Training for Crafts and Heritage

[HTTPS://WWW.CEARTE.PT](https://www.cearte.pt)

CEARTE – Professional Training Centre for Crafts and Heritage, based in Coimbra and unique in the IEPF network dedicated to these areas, promotes specialised training for the crafts and heritage sectors. It develops qualification, skills certification and entrepreneurship support actions throughout the country, valuing traditional know-how, innovation and skilled employment.



CHROMA • scanland
project

Chroma – Restauració del Patrimoni

[HTTPS://WWW.CHROMA.CAT](https://www.chroma.cat)

Company for listed buildings. Historical-artistic and chromatic studies; Non-destructive analyses and tests; Architectural projects; Damage assessment; Industrial archaeology – machinery; Consultancy / Advice – project phase, restoration protocols and economic valuation; Digitalisation of heritage – 3D laser scanning; Training / Outreach – classes, conferences, fairs; Restoration workshop – movable goods of various materials; Reproductions of artistic pieces.

CIRAM: Scientific Excellence in Archaeometric Analysis

Since its founding in 2004, CIRAM has been committed to providing archaeologists with the highest scientific standards and fostering a constructive, collaborative dialogue. Our dedication to scientific rigor, service quality, and rapid turnaround times is sustained through continuous investment in next-generation instrumentation and the recruitment of specialists in dating and materials analysis. To better meet the evolving needs of archaeological research, we have recently expanded our analytical capabilities – doubling both the capacity of our microanalysis laboratory and that of our radiocarbon dating facility. Building on numerous successful collaborations, CIRAM continues to broaden its range of services and stands ready to support your research projects with precision, reliability, and scientific excellence.



Communicating Archaeology

[HTTPS://COMUNICARARQUEOLOGIA.PT](https://comunicararqueologia.pt)

Giving voice to the past, inspiring the present, building a common future. "Communicating Archaeology" is a project that brings archaeological knowledge closer to society, making it accessible, inspiring and impactful. Among its initiatives is the Let's Rock Podcast – a Stone Age Podcast, winner of the 2024 PODES Award in Science, Technology and Education.

Conservation Practice

[HTTPS://WWW.CONSERVATIONPRACTICE.PT](https://www.conservationpractice.pt)

Conservation Practice – Architecture Conservation & Heritage Consultancy

Conservation Practice is a built heritage consultancy that supports heritage projects from planning to execution. We work with architects, property developers, heritage professionals and institutions, responding to their needs in the conservation and management of architectural and built heritage. We offer services in the areas of conservation and restoration project management, world heritage consultancy, heritage impact studies, tourism management and preliminary reporting.



Department of Conservation and Restoration NOVA FCT

[HTTPS://WWW.DCR.FCT.UNL.PT](https://www.dcr.fct.unl.pt)

The Department of Conservation and Restoration at NOVA FCT is dedicated to excellence in teaching, research advancement and community service, actively contributing to the preservation of our cultural heritage for present and future generations.



EDIA – Empresa de Desenvolvimento e Infra-estruturas do Alqueva, S.A.

[HTTPS://WWW.EDIA.PT](https://www.edia.pt)

Alqueva Territory Living Heritage of Water, Science, Nature and Culture

EDIA, the managing entity of the Alqueva Project, integrates cultural and landscape enhancement into its mission to promote sustainable development in the region. Its three cultural facilities reflect this vision: the Alqueva Centre interprets the transformation of the territory and its relationship with water; the Museum of Light records the construction of the new village and the change in its population; and the Noudar Nature Park is a benchmark for the conservation of biodiversity and the natural heritage of the Alentejo.



EDIGMA

EDIGMA

[HTTPS://EDIGMA.COM](https://edigma.com)

EDIGMA is a Portuguese company with over 20 years of experience, a leader in the development and implementation of immersive and interactive experiences, digital signage projects, and customer service management. It has a multidisciplinary team of visionaries, designers, engineers, programmers, and project managers who have applied all their knowledge to the development of disruptive and innovative experiences.

School of Arts | CITAR | UCP

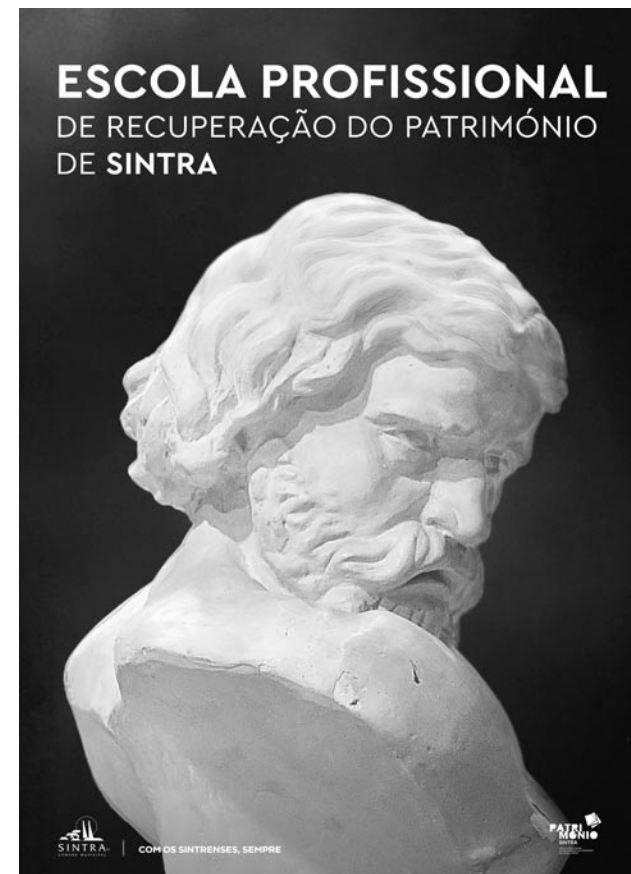
[HTTPS://WWW.DCR.FCT.UNL.PT](https://www.dcr.fct.unl.pt)

TRAINING | RESEARCH

Heritage, Conservation and Restoration

**BACHELOR'S DEGREE | MASTER'S DEGREE | DOCTORATE |
ADVANCED TRAINING**

Study | Heritage | Art | Collections | Management | Physics
Chemistry | Biology | Examination | Materials | Methodologies
| Enhancement | Technologies | Ethics | Intervention



**Escola Profiissional de Recuperação
do Património de Sintra**

[HTTPS://WWW.ESCOLADOPATRIMONIO.PT](https://www.escoladopatrimonio.pt)

EPRPS is a private vocational school, founded in 1989 by the Sintra City Council, which offers the following training programs: Conservation and Restoration Assistant; Photography Technician; Interior and Exterior Design Technician; Music Production and Technology Technician; Audiovisual Technician; Contemporary Dance Performer; String and Keyboard Instrumentalist.

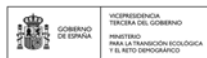


Cátedra UNESCO
en Economía Creativa
para el Desarrollo Sostenible
y Transformar el Mundo



España Creativa

[HTTPS://WWW.ESPANACREATIVA.ES](https://www.espanacreativa.es)



red eléctrica



FAR – Fortified Fortresses of the Border

WWW.ROTADASFORTALEZAS.PT

3 Fortresses, 1 Destination

The Fortified Fortresses of the Border Route is a joint initiative of the municipalities of Almeida, Marvão and Valença, combining history, heritage and tourism in a unique cultural experience. Based on the extraordinary military legacy of the forts, strategically distributed along the Portuguese-Spanish border, this route invites you to discover and experience the daily life of the border population and the unique richness of their territory. More than just a route, this trail is a journey through time. The aim is to promote and boost a sustainable tourism product, where each fortification tells stories of resistance, ingenuity, identity and memory of our nation. Through joint actions, the aim is to improve the tourism offer, diversify experiences and integrate cultural programming, bringing visitors closer to the communities and the territory they inhabit. Part of the strategy to apply for UNESCO World Heritage status for the Fortified Fortresses of the Raia, this initiative reinforces the commitment of the three municipalities to preserve and promote a heritage of exceptional historical and symbolic value. Guardians of the oldest and most stable border in Europe, these fortresses stand as ambassadors of the fortified heritage of the Raia.



Fundação CulturSintra

[HTTPS://WWW.REGALEIRA.PT](https://www.regaleira.pt)

The Cultursintra FP Foundation is a public foundation governed by private law, established by the Municipality of Sintra on 7 November 1996. Its mission is to promote culture and preserve heritage, contributing to its accessibility. It is currently responsible for managing Quinta da Regaleira, Quinta da Ribafria and Paço da Ribafria.

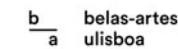


Fundação Manuel Cargaleiro

[HTTPS://WWW.FUNDACAOMANUELCARGALEIRO.PT](https://www.fundacaomanuelcargaleiro.pt)

The Manuel Cargaleiro Foundation, established by artist Manuel Cargaleiro in 1990, is dedicated to preserving and promoting his work and promoting art and culture in Portugal.

In 2025/2026, the Foundation will present the first edition of the Manuel Cargaleiro Awards, with the aim of celebrating the founder's legacy by recognising excellence in contemporary artistic creation and research related to his work.



Fundação Millennium bcp

WWW.MILLENNIUMBKP.PT

30 years #sharing culture

Celebrating creators – from visual arts to music, performing arts to heritage – means recognising their essential role in the culture we build and share. The Millennium bcp Foundation is proud to have contributed to the preservation and enhancement of Portuguese cultural heritage over the past 30 years.



Queen Leonor Fund/ Santa Casa da Misericórdia de Lisboa

[HTTPS://FRDL.SCML.PT](https://frdl.scml.pt)

The Queen Leonor Fund supports the restoration of the historical heritage of Portuguese charitable institutions. We have supported 59 rare cases of heritage support from the 16th, 17th and 18th centuries throughout the country, with discoveries and comprehensive work that restore to worship and culture the best of five centuries of history of the Portuguese Misericórdias.

Herifairs – European Network of Heritage Fairs

[HTTPS://WWW.HERIFAIRS.EU/FAIRS/](https://www.herifairs.eu/fairs/)

HeriFairs represents and empowers the cultural heritage sector and is an influential voice in promoting the interests of its members at an international level. The European Network of Heritage Fairs (Herifairs®) is the first and unique operative platform for exchange and development synergies between the most prestigious fairs in conservation, restoration and promotion of cultural heritage in Europe, with an open cooperation with other international fairs and events in the world.



Technical consultancy specialising in cultural heritage

At HeritArq, we help public administrations, institutions, associations, individuals and property owners to manage the historical and cultural heritage assets in their care or in which they have an interest, offering our experience and expertise to provide management and advisory solutions. HeritArq has a team with more than 20 years of professional experience in the study, intervention, management, restoration, and enhancement of movable and immovable property related to history and culture in both the private and public spheres.

HeritArq

HeritArq

[HTTPS://HERITARQ.COM/ES/](https://heritarq.com/es/)

Activities carried out by HeritArq:

- World Heritage consulting: Heritage Impact Assessments, applications and reports
- Study of historic and heritage buildings
- Technical projects for the restoration, rehabilitation, intervention and enhancement of historic and heritage buildings and sites
- Economic and management feasibility analysis
- Proposals for the management of heritage systems and complex heritage sites
- Proposals for enhancement in the field of national and international recognition programmes
- Territorial, strategic and urban planning.

iGuzzini

iGuzzini

[HTTPS://WWW.IGUZZINI.COM](https://www.iguzzini.com)

Illuminating heritage means illuminating our identity, celebrating the richness of Iberian cultures with light that preserves, inspires and reveals meaning.



Instituto de Estudos Medievais

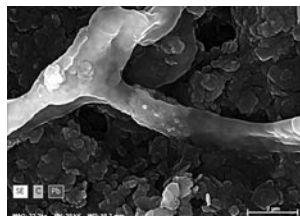
[HTTPS://IEM.FCSH.UNL.PT](https://iem.fcsih.unl.pt)

Medieval is the IEM brand created in 2022, whose main purpose is to transfer the knowledge generated at the IEM to diverse audiences. Medieval's mission is therefore to promote the creation of economic and social value from knowledge, while simultaneously promoting the preservation, dissemination and appreciation of our heritage and historical legacy from the medieval period. The Middle Ages are promoted and disseminated through innovative products and solutions capable of attracting different audiences to a rich and fascinating era. To this end, in close collaboration with our researchers, we develop heritage communication projects; prepare and renovate museums and interpretation centres; produce and edit videos and documentaries; create itineraries and exhibitions; promote various events; and develop archaeological projects (safeguarding, prevention and emergency).

HERCULES Laboratory

[HTTPS://WWW.HERCULES.UEVORA.PT](https://www.hercules.uevora.pt)

The HERCULES Laboratory at the University of Évora is dedicated to the study and enhancement of cultural heritage, integrating physical and materials sciences in interdisciplinary approaches. With state-of-the-art laboratories and innovative research, it operates in the fields of Archaeometry, Sciences for the Arts, Sciences for Conservation and the development of new materials. It also coordinates the ERIHS.pt infrastructure and the European ARCHMAT Master's degree in Archaeometry.



MUDE – Museu do Design

[HTTPS://MUDE.PT](https://mude.pt)

MUDE – Museu do Design (Design Museum) is a museum owned by Lisbon City Council, established in 2006 and dedicated to all forms of design. MUDE occupies the entire block of the former headquarters of Banco Nacional Ultramarino, in Baixa Pombalina, and has areas for exhibitions, education, study, debate and creation. The current collection has around 35,000 inventory entries, organised into 24 collections and 6 centres [Stage; Editorial; Graphic; Contemporary Jewellery; Fashion; Product (including Interiors)].



Município de Barcelos

[HTTPS://WWW.CM-BARCELOS](https://www.cm-barcelos.pt)

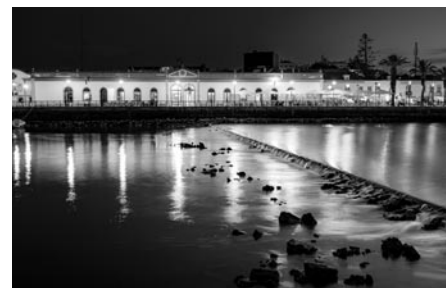
Barcelos is a creative destination, ideal for those seeking culture, heritage and identity. A hub of unique experiences, marked by the diversity of its tangible and intangible heritage. A UNESCO Creative City, Barcelos is an international benchmark for the excellence and variety of its craftsmanship, notably pottery, figurines, São Miguel da Carreira embroidery and Portugal's greatest symbol – the Rooster of Barcelos. Be creative, come and experience Barcelos!



Município de Tavira

[HTTPS://CM-TAVIRA.PT/SITE](https://cm-tavira.pt/site)

The Municipality of Tavira participates in AR-PA 2025 to showcase its vast cultural heritage. A city distinguished as a representative community of the Mediterranean Diet, included in UNESCO's Intangible Cultural Heritage list, Tavira stands out for its preserved historic centre, rich religious heritage, a museum that houses the emblematic Tavira Vase from the Islamic period, and the iconic old bridge over the Gilão River. A territory where traditions and history intertwine in a genuinely different Algarve.



Município de Vila Franca de Xira

[HTTPS://WWW.CM-VFXIRA.PT](https://www.cm-vfxira.pt)

The municipality of Vila Franca de Xira is characterised by the hospitable spirit of its people, who keep alive the flame of a region steeped in tradition and customs, most of which have remained intact to this day. Life in the Lezírias, the connection to the River Tagus and the historical ancestors are the ingredients for a unique experience.



Museu de Portimão

[HTTPS://WWW.MUSEUDEPORTIMAO.PT](https://www.museudeportimao.pt)

The Portimão Museum presents itself as a permanent observatory and a structure for cultural mediation to investigate, conserve, interpret, disseminate and value the most relevant tangible and intangible testimonies of the history, heritage, territory, memory and identity of the local and regional community, in its interaction with the world.



CENTRO CULTURAL COSTEIRO SESIMBRA

Museu de Sesimbra

[HTTPS://CENTROCULTURALCOSTEIRO.SESIMBRA.PT](https://centroculturalcosteiro.sesimbra.pt)

Coastal Cultural Centre and Ideal Grocery Store: The history, culture, memory and identity of a community, in a legacy for the future.



SESIMBRA



MUSEU MUNICIPAL LOULÉ

Museu Municipal de Loulé

[HTTPS://WWW.MUSEUDELOULE.PT](https://www.museudeloule.pt)

The Municipal Museum of Loulé was founded in 1995, the result of a dream cherished for decades by the people of Loulé. It works with Territories, Identities and Memories in close collaboration with the communities that represent them. Today, the Museum is a multi-site structure with eight centres, two monuments and a temporary exhibition. The ongoing Cultural Quarter project will be the starting point for discovering the UNESCO Algarvensis Global Geopark, to which it belongs.

loulé
Aqui e Agora



Museu Nacional Ferroviário

[HTTPS://WWW.FMNF.PT](https://www.fmnf.pt)

The National Railway Museum tells the story of railways in Portugal. Through one of the finest collections of railway heritage in Europe – with around 36,000 objects! We offer a journey through time, from the first steam locomotives to the rail transport of the future. A space for collective experience, dialogue and sharing, open to anyone who wants to learn about the cultural heritage and the historical, symbolic and technological role of rail transport in Portugal.



Napperon

[HTTPS://NAPPERON.PT](https://napperon.pt)

We are design. We are engineering. We are made up of ourselves, our experience and our desire to develop projects that offer experiences for everyone. We give shape to ideas. We create communication and adapt spaces for new experiences. We enjoy learning about stories and “spreading” them on the walls of the museums we design, or on the pages of a book we lay out. We love the identity of places and people and create new narratives for territories. We are made up of the things we do, the products we improve and the spaces we create.

We are Napperon.



exhibition *sentir a revolução*, palácio egipto, oeiras, 2025

NCREP – Heritage Consultancy, Lda.

[HTTPS://NCREP.PT](https://ncrep.pt)

NCREP – Heritage Consultancy, Lda., is a company that provides consultancy, inspection and diagnostic services, seismic vulnerability analysis, monitoring and design in the field of building rehabilitation.



The Museum visits the School – Câmara Municipal de Loures

[HTTPS://WWW.CM-LOURES.PT](https://www.cm-loures.pt)

The municipal project THE MUSEUM VISITS THE SCHOOL aims to bring schoolchildren closer to the Municipal Museums of Loures, developing themes common to school programmes and linking curriculum content to local history. This project promotes and disseminates cultural and heritage issues, with classroom topics highlighting shared heritage and the importance of local communities in preserving the memory and identity of the Loures region.

Palazzo Spinelli

[HTTPS://WWW.PALAZZOSPINELLI.ORG/ITA/DEFAULT.ASP](https://www.palazzospinelli.org/ita/default.asp)

Institute for Art and Restoration – Palazzo Spinelli Florence, Italy

Excellence in Heritage Management, Conservation and Restoration
Palazzo Spinelli organizes degree programs, vocational training, postgraduate courses, research projects, short courses and online courses in heritage and museum management, conservation and restoration, artistic techniques, exhibitions organization and performing arts events.



Parques de Sintra

[HTTPS://WWW.PARQUESDESINTRA.PT](https://www.parquesdesintra.pt)

Parques de Sintra is a public company responsible for managing and promoting some of Portugal's most important cultural and natural heritage sites, including the National Palaces of Pena, Sintra and Queluz, the Moorish Castle, Monserrate Park and Palace, the Capuchos Convent and the Portuguese School of Equestrian Art. Thirteen times winner of the World Travel Award for Best Conservation Organisation in the World, it is now an international benchmark in sustainable heritage management. Without recourse to the State Budget, it fulfils its mission through the revenue generated by the heritage itself, reinvesting it in its conservation, in improving the visitor experience and in creating value for the community. With a new strategic ambition, Parques de Sintra asserts itself as an agent of the future: innovative, participatory, and committed to the active preservation of the cultural landscape of Sintra and the heritage that connects us.



**Military historical heritage:
Seven museums and more than thirty
collections open to visitors
throughout the country**

[HTTPS://WWW.EXERCITO.PT](https://www.exercito.pt)

The Portuguese Army preserves and showcases military heritage through a vast network of museums and collections that can be visited throughout the country. A national presence that affirms the memory, identity, and strength of those who built the history of Portugal.



Preside à Universidade Europeia - KreativEU



Politécnico de Tomar

[HTTPS://WWW.IPT.PT](https://www.ipt.pt)

IPT is a polytechnic higher education institution located in the Médio Tejo region, comprising the Tomar School of Management, the Tomar School of Technology and the Abrantes School of Technology. It has a range of modern facilities to support students in a welcoming environment with extensive green areas. Of particular note are three research centres accredited by the FCT with projects of regional, national and international impact.



"Women in Resistance to the Dictatorship in Setúbal" Project

[HTTPS://WWW.MUN-SETUBAL.PT](https://www.mun-setubal.pt)

This project resulted from the combination of historiographical and anthropological methodologies, conceiving an investigation based on the collection of documents from political cases in the PIDE archives at ANTT and interviews with individuals involved. The aim was to recover the memories of women linked to Setúbal who suffered the hardships of fascist political repression, promoting conferences, exhibitions (including abroad), a documentary and the publication of an e-book.



Punta Begoña. Heritage that connects / Heritage that connects with society

[HTTPS://WWW.PUNTABEGONAGETXO.EUS](https://www.puntabegonagetxo.eus)

Memory, architecture and landscape of Europe.

"It is one of the most interesting historical capsules on the peninsula".
Xurxo Ayán, archaeologist and populariser.

"It is exceptional as heritage, and for its vocation and ability to connect with society".

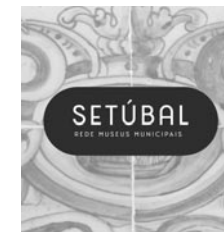
Gonzalo Arroita, three-time Europa Nostra Award winner.

Realizasom

[HTTPS://WWW.REALIZASOM.COM](https://www.realizasom.com)

Development of technological solutions and production of content accessible to all audiences. We are the benchmark in audio and video guides with 100 projects installed throughout the country!

accessibility | museography | audiovisuals | multimedia | gaming | digital animation | mobile applications | webAPP | audio and video guides | tour guide | immersive content (AR | VR | 360°) | sensory experiences | exhibitions | communication | cultural management



Rede de Museus Municipais de Setúbal – Município de Setúbal

[HTTPS://MUSEUS.MUN-SETUBAL.PT](https://museus.mun-setubal.pt)

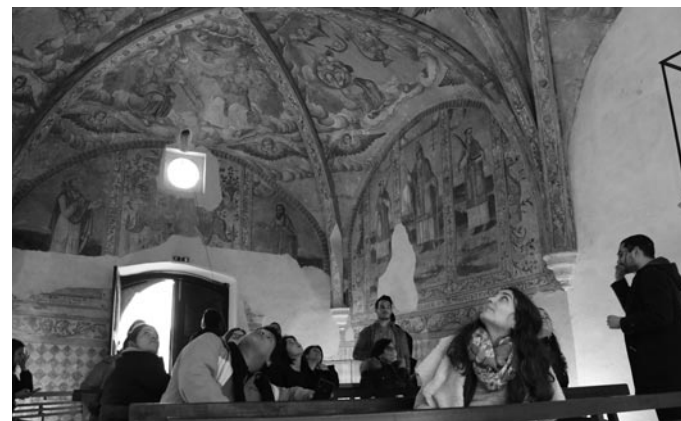
The Setúbal Museum Network brings together a diverse group of municipal cultural spaces dedicated to promoting and sharing the municipality's tangible and intangible heritage. With valuable collections and a dynamic and accessible programme, it brings audiences together, encourages new forms of participation, promotes universal access to culture and heritage, and strengthens the involvement of communities in the cultural life of Setúbal.



Revelamos

[HTTPS://WWW.REVELAMOS.COM](https://www.revelamos.com)

Revelamos is a communications company specialising in culture, heritage and tourism. We combine photography, writing and design to create visual and editorial narratives that showcase heritage, bringing people closer to their collective memory with a creative, ethical and humanised approach.



The Rota do Fresco ® is a heritage-based territorial development project created in 1998 in Alentejo: visits and admissions to buildings that would otherwise be inaccessible, fresco painting workshops and Heritage Camps – International Volunteering in Cultural Heritage are some of the main activities of the first cultural tourism route in Portugal. From the outset, the Fresco Route set out to open these doors – literally – and reveal to the local community and visitors the largest collection of fresco murals in Portugal, with over 780 registered examples. The project is based on accessibility, cultural democracy, sustainable territorial development and the active involvement of local communities. Integrating 15 municipalities in Alentejo and more than 50



Rota do Fresco

[ROTADOFRESKO.PT](https://rotadofresco.pt)

[LAB.SPIRA.PT](https://lab.spira.pt)

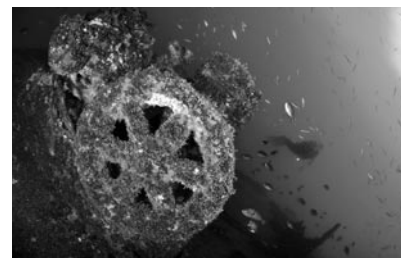
monuments, the Fresco Route is managed by Spira – heritage revitalisation – a leading company in the Cultural Heritage sector that is exclusively dedicated to bringing people – all people – closer to this common heritage. Stubbornly based in the second least populated municipality in mainland Portugal – Alvito – with its headquarters in a century-old, restored grocery store with its doors open to the street, Spira has created, in addition to the Rota do Fresco project initiatives, a set of activities anchored in the endogenous resources of the Alentejo and the particular 'way of life' of the region, grouped under the name Spira LAB: Arts & Crafts Immersions, Slow Tours, Heritage Summer Camps for kids, community initiatives, and the Dar de Si programme as part of our social responsibility efforts... we experience and offer endless opportunities to experience cultural heritage.



Romanesque Route Tourism in Porto and Northern Portugal

[HTTPS://WWW.ROTADOROMANICO.COM/PT](https://www.rotadoromanico.com/pt)

In the lands of the Sousa, Tâmega and Douro valleys, in the heart of Northern Portugal, stands an important architectural heritage of Romanesque origin. Common features that preserve legends and stories born with the founding of the nation and bear witness to the important role that this territory once played in the history of the nobility and religious orders in Portugal. This heritage is structured in the Route of the Romanesque.



Rotas | ITINERÁRIOS
AÇORES | CULTURAIS E
PAISAGÍSTICOS

Azores Routes – Cultural and Scenic Itineraries

[HTTPS://ROTAS.AZORES.GOV.PT](https://rotas.azores.gov.pt)

Rotas Açores invites you to discover the archipelago through its cultural, natural and intangible heritage. A project that unites islands, stories and people through itineraries that highlight the authenticity of the Azores.



CERTIFICAÇÃO



PRÉMIOS



Prémio Nacional de Turismo (2018)

Somos o que Comemos



Prémio Nacional de Turismo (2021)

Rota Açores – Itinerários Culturais e Paisagísticos



Segundo Prémio Nacional de Turismo (2023)

Offices | Novo Design



Finalista Prémio Nacional de Turismo (2023)

Offices | Novo Design



Finalista Prémio Nacional de Turismo (2023)

Spira Lab

LICENÇAS



Spira

[HTTPS://WWW.SPIRA.PT](https://www.spira.pt)

Founded in 2007, but based on an emblematic project created in 1998 – the Rota do Fresco –, Spira – heritage revitalisation is dedicated to bringing people closer to Cultural Heritage and transforming their perspective on this common heritage.

Stubbornly based in the second least populated municipality in mainland Portugal – Alvito, Alentejo – with operations centred on a fully restored century-old grocery store, Spira works with cultural heritage as a 'collective asset' that belongs to everyone equally.

Combining Knowledge, Creativity and Capacity for action to research and develop projects focused on this asset, exploring it as a strategic asset for generating more harmonious development in the country, Spira plays an aggregating role, believing that everyone should benefit from the economic, social and cultural returns that cultural heritage can generate: all of Spira's work, on its various fronts, has this underlying purpose.



CENTRO₂₀₃₀
Os Fundos Europeus mais próximos de si.



Cofinanciado pela União Europeia



Turismo do Centro de Portugal

[HTTPS://TURISMOCENTRO.PT](https://turismodocentro.pt)

Sumptuous, mysterious, majestic.
There are four of them, and they are unique:
the World Heritage Sites in Central Portugal.

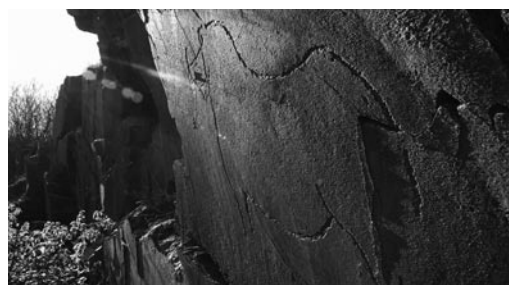
Central Portugal is a vast, rich and diverse region that tells stories about our history and reveals secrets and mysteries to the most attentive eyes and interested ears. This is the land where the future was conquered and promises were fulfilled. This is the land that established knowledge and eternalised love. This is a universal land. This is the land that awaits you.



Vila Nova de Foz Côa: One municipality, two World Heritage sites.

[HTTPS://WWW.CM-FOZCOA.PT](https://www.cm-fozcoa.pt)

In the municipality of Vila Nova de Foz Côa, each historic centre invites visitors to discover a unique and authentic heritage. Monuments, squares and streets hold centuries of faith, art and tradition, perpetuating stories that unite generations in spaces full of identity, culture and life. Foz Côa, Capital of the Almond Blossom, is also an exceptional territory, home to two World Heritage Sites – the Prehistoric Art of the Côa Valley and the Alto Douro Wine Region. Here, the harmony between humans and nature is revealed in a setting of unique beauty, where products of excellence are born, such as wine, almonds, olive oil and schist. A true hymn to the authenticity and charm of a land that celebrates its traditions and honours its historical and cultural heritage.



Links with History: discovering the historic houses of Ribeira Lima

[HTTPS://WWW.CM-PONTEDELIMA.PT](https://www.cm-pontedelima.pt)

The activity 'Links with History: discovering the historic houses of Ribeira Lima', which took place in September 2024, consisted of opening 18 historic houses, most of which had never been opened before, for cultural enjoyment. The visits were guided by the owners and students from the local secondary school. With around 1,500 visits over four days, it was based on a multiple partnership: the University; Ponte de Lima Town Council; TURIHAB, the School, and the owners of the Houses.





World Monuments Fund

[HTTPS://WWW.WMF.ORG](https://www.wmf.org)

World Monuments Fund (WMF) is an international non-profit organization with six decades of experience dedicated to safeguarding irreplaceable cultural heritage, having developed more than 700 projects in 112 countries. Its mission is focused on addressing contemporary challenges, such as adapting to climate change, promoting social inclusion, encouraging sustainable tourism, and post-crisis recovery.

In Portugal, WMF stands out for its extensive legacy in the preservation of iconic monuments, such as Belém Tower and Jerónimos Monastery, thanks to partnerships with both national and international supporters and the Portuguese Government. The positive impact of its work was recognized by the President of the Republic in 2025, having been decorated with the title of Honorary Member of the Order of Infante D. Henrique.



**(HISTORICAL
CENTRES)**



PROGRAMME.



PROGRAMME. (HISTORICAL CENTRES)

CEREMONIES.

OFFICIAL OPENING

December, 4th ___ 11H00
OLGA CADAVAL CULTURAL CENTRE

IBERIAN HERITAGE AWARDS CEREMONY + DINNER + HERITAGE PARTY

December, 5th ___ 19H30
MAIN AUDITORIUM
___ OLGA CADAVAL CULTURAL CENTRE
+ COFFEE SHOP ___ MUNICIPAL LIBRARY
OF SINTRA

INTERNATIONAL HERITAGE TALKS.

HERITAGE CAMPS – CULTURAL HERITAGE VOLUNTEERING

December, 4th ___ 15H30
SMALL AUDITORIUM
___ OLGA CADAVAL CULTURAL CENTRE

KEY NOTE SPEAKER DINNER ABOUT MANAGEMENT OF HISTORICAL CENTRES WITH CARLO FRANCINI, FLORENCE HISTORICAL CENTRE DIRECTOR

December, 4th ___ 20H30
SALA DOS CISNES
___ NATIONAL PALACE OF SINTRA

MASTERCLASS.

COMMUNICATING HERITAGE WITH JUSTIN ALBERT

December, 5th ___ 11H30
REHEARSAL ROOM
___ OLGA CADAVAL CULTURAL CENTRE

PODCAST. PATRIMONIO.PT

PERSPECTIVES ON HISTORIC CENTRES

MECANISMOS FINANCEIROS ALTERNATIVOS

ALTERNATIVE FINANCIAL
MECHANISMS
December, 4th ___ 14H00-15H00
EXHIBITION HALL, FLOOR 0
___ OLGA CADAVAL CULTURAL CENTRE

GESTÃO DE CENTROS HISTÓRICOS I

MANAGEMENT OF
HISTORICAL CENTRES I
December, 5th ___ 10H00
SMALL AUDITORIUM
___ OLGA CADAVAL CULTURAL CENTRE

GESTÃO DE CENTROS HISTÓRICOS II - O CASO DE SINTRA

MANAGEMENT OF HISTORICAL
CENTRES II - THE CASE OF SINTRA
December, 5th ___ 11H30
SMALL AUDITORIUM
___ OLGA CADAVAL CULTURAL CENTRE

MODELOS DE GESTÃO PATRIMONIAL

HERITAGE MANAGEMENT
MODELS
December, 5th ___ 15H00-16H15
SMALL AUDITORIUM
___ OLGA CADAVAL CULTURAL CENTRE

BOAS PRÁTICAS BEST PRACTICES

December, 5th ___ 16H30-17H45
SMALL AUDITORIUM
___ OLGA CADAVAL CULTURAL CENTRE

IBERIAN HERITAGE
FINALISTS AWARDS.

PUBLIC PITCH.

December, 4th____
09H00-10H45. 14H30-16H00. 16H30-18H00
MAIN AUDITORIUM____
OLGA CADAVAL CULTURAL CENTRE

**09H00. BEST COMMUNICATION
PROJECT**

**Restauración Abierta de Punta Begoña.
Patrimonio que conecta a la Sociedad.**
FUNDACIÓN PUNTA BEGOÑA
FUNDAZIOA

Mercearia Ideal – A loja do Museu
MUSEU MARÍTIMO DE SESIMBRA

Museu do Conflito
TRIBUNAL DA RELAÇÃO DO PORTO

**09H45. BEST MEDIATION
PROJECT**

Conímbriga em Quadículas
MUSEU NACIONAL DE CONÍMBRIGA

Personagens com História
PARQUES DE SINTRA - MONTE DA LUA

Um Dia na Pré-História
MUSEU DE PORTIMÃO

**Agua, Arte Y Vida: Canal de Castilla.
Antonio López y el Canal de Castilla**
ASOCIACIÓN ESPAÑA CREATIVA

**14H30. BEST TOURING
PROJECT**

Rotas dos Azulejos
IP PATRIMÓNIO

**Filme Documental
– O Passado, Presente no Futuro**
CÂMARA MUNICIPAL DE VILA
FRANCA DE XIRA

VPLAY
NAPPERON

**15H15. BEST ACCESSIBILITY
PROJECT**

**Acessibilidade na Rede de Museus
Municipais de Setúbal**
CÂMARA MUNICIPAL DE SETÚBAL

**Disciplina OFCT- O Nosso Património
CÔA PARQUE – FUNDAÇÃO PARA A
SALVAGUARDA E VALORIZAÇÃO DO
VALE DO CÔA**

**Requalificação integral do edifício
do MUDE: um legado para todas as
gerações e para o futuro**
MUDE - MUSEU DO DESIGN

**16H30. BEST PARTNERSHIP
PROJECT**

**Exposição temporária “Balsa, Cidade
Romana” - Modelo Inovador de
Parcerias Patrimoniais**
MUSEU MUNICIPAL DE TAVIRA

Centro Cultural Costeiro | Sesimbra
MUSEU MARÍTIMO DE SESIMBRA

**Vínculos com (a) História: à descoberta
das casas históricas da Ribeira Lima**
IHC - NOVA.FCSH



**Parcerias que fazem História: Conhecer
e Valorizar os Banhos Islâmicos e a
Casa Senhorial dos Barreto. Do Lugar
ao Museu**
MUSEU MUNICIPAL DE LOULÉ

**Reabilitação e Restauro da Igreja da
Misericórdia de Salvaterra de Magos**
FUNDO RAINHA D. LEONOR

INNOVATION POINT.

December, 4th — 15H00-18H30

EXHIBITION HALL, FLOOR 1 — OLGA CADAVAL CULTURAL CENTRE

15H00.

Madeira Histórica em contexto de Alterações Climáticas: Resiliência e Inovação no Palácio Nacional de Sintra
NCREP | BRUNO QUELHAS

15H30.

Soluções de acessibilidade
REALIZASOM | ANDRÉ COELHO

16H00.

Guias e Mapas
ALFA LUPO | MAR FUENTES LANNING

16H30.

El centre històric del pla de la ciutat de Barcelona
CHROMA RESTAURACIÓ DEL PATRIMONI | CRISTINA THIÓ

17H00.

Creativa Rural
ESPANA CREATIVA

17H30.

Descobrimos património através investigação científica
VÍNCULOS COM (A) HISTÓRIA: À DESCOBERTA DAS CASAS HISTÓRICAS DA RIBEIRA LIMA | MARIA LURDES ROSA E RITA SAMPAIO DA NÓVOA

18H00.

Comunicar Arqueologia
COMUNICAR ARQUEOLOGIA | SARA CURA

December, 5th — 10H00-12H30

EXHIBITION HALL, FLOOR 1 — OLGA CADAVAL CULTURAL CENTRE

10H00.

Impressão 3D na acessibilidade
BLUE LINE | PAULO GOMES

10H30.

Divulgar Património com Ilustração e Infografia
ANYFORMS DESIGN | LUÍS MIGUEL TAKLIM

11H00.

Luz
IGUZZINI | PEDRO GAMA

11H30.

Digital Twins - O património no coração da experiência digital
3DECIDE - MAKING BUSINESS VISUALLY | CARLOS REBELO

12H00.

MUDE - Museu do Design: Um Património valorizado pela Museologia e o Design
MUDE - MUSEU DO DESIGN | BÁRBARA COUTINHO E INÊS CORREIA

December, 5th — 14H00-16H00

EXHIBITION HALL, FLOOR 0 — OLGA CADAVAL CULTURAL CENTRE

14H00.

Os Centros Históricos dos Lugares Património da Humanidade do Centro de Portugal
TURISMO DO CENTRO | SÓNIA OLIVEIRA

14H30.

Rota do Românico: uma experiência fundada na História
ROTA DO ROMÂNICO | TURISMO DO PORTO E NORTE DE PORTUGAL | ROSÁRIO MACHADO

15H00.

HEDGE - Herança e DiGitalização para o Enriquecimento cultural
DEPARTAMENTO DE CONSERVAÇÃO E RESTAURO NOVA FCT | MÁRCIA VILARIGUES

15H30.

O Instituto Politécnico de Tomar e a preservação do património cultural: Conservação e restauro, formação e divulgação/
KreativEU: Uma aliança europeia em torno da inovação no Património Cultural
POLITÉCNICO DE TOMAR

December, 5th — 16H30-18H30

EXHIBITION HALL, FLOOR 1 — OLGA CADAVAL CULTURAL CENTRE

16H30.

Projecto “Mulheres na Resistência à Ditadura em Setúbal”
CÂMARA MUNICIPAL DE SETÚBAL | DIOGO FERREIRA

17H00.

Acessibilidade na Rede de Museus Municipais de Setúbal
REDE DE MUSEUS MUNICIPAIS DE SETÚBAL | MICHELLE TEIXEIRA SANTOS

17H30.

CôaCulto - Cultura em Movimento
VILA NOVA DE FOZ CÔA | ANA FILIPE

18H00.

Barco Varino Liberdade - Preservação da Memória e Valorização de um Rio/ Vila Franca de Xira - O Passado como ponte para o Futuro
MUNICÍPIO DE VILA FRANCA DE XIRA | RICARDO PEDRO E IVO SOUSA

HERITAGE EDUCATION.

“GET CLOSER”: SCHOOLS GO TO HERITAGE

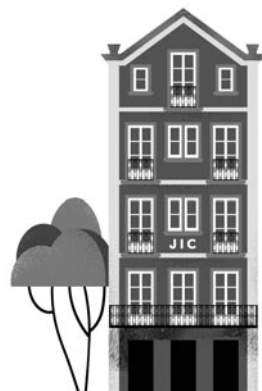
December, 4th and 5th
OLGA CADAVAL CULTURAL CENTRE
+ CLARABÓIA ROOM OF MU.SA





IBERIAN BIENNIAL
OF CULTURAL HERITAGE
**04. 05.
DECEMBER
2025.**

AR-PA PATRIMÓNIO
cultural BIENAL IBÉRICA
SINTRA
OLGA CADAVAL CULTURAL CENTRE
MU.SA - MUSEUM OF ARTS OF SINTRA
**(CENTROS
HISTÓRICOS)**
(HISTORICAL CENTRES)





ORGANIZATION



2025 EDITION PROMOTER



CO-PROMOTER



INSTITUTIONAL PARTNER



PREMIUM PARTNER



HIGH SPONSORSHIP



MEDIA PARTNER

